



## Earth Leakage Earth Continuity ELEC Relay

### Application

The Bramco ELEC Relay provides detection of Earth Fault Currents flowing in a power system and monitoring of the Earth Circuit in a supply cable by grounding the pilot core via a diode, polarised positive to earth.

### Earth Leakage Offers:

- Easily configured latch or non-latch and fixed Fail-safe operation
- Easily adjustable trip time and current settings
- LED indication:
  - EL Warning - indicates the current exceeds the trip threshold
  - EL Trip
  - EL Latched - indicates the EL relay is latched
- External latch reset
- 2x Separate voltage free EL contacts
- May be used on limited/unlimited systems

### Earth Continuity Offers:

- Easily configured latch or non latch and fixed Fail-safe operation
- LED indication
  - EC healthy
  - EC latch - indicates the EC relay is latched
- External latch reset
- 2x Separate voltage free EC

### Additional Features:

- Diode termination to earth on pilot wire
- Operational 0-45 Ohms
- Remote mode for start and stop control via pilot wire
- LED indication:
  - Power – power healthy indication
  - OC toroid – toroid connections open circuit
  - Pilot open – pilot resistance above 45 Ohms
  - Pilot short – pilot isolation resistance below 500 Ohms
  - Pilot short – pilot isolation resistance below 500 Ohms

### Specifications:

#### Power Input

- 24-48vDC

#### Earth Leakage

Current - 30 - 500mA  
Trip Delay Time - 30 - 500ms

#### Earth Continuity

Pilot Resistance - 0-45 Ohms  
Trip Delay - 100ms

#### Relay Contacts

- 1 x C/O
- 1 x N/O
- 5Amp 250vAC

#### Operating Temperature

0-40°C

#### Dimensions

150mmW x 75mmH x 110mmD

#### Material

High impact resistant polycarbonate

#### Mounting

DINrail or screw mounting

### Bramco Contacts

#### Head Office

Bramco Electronics  
ABN 49 327 604 798

Unit 2&3/3 Callistemon Close  
Warabrook NSW 2304  
PO Box 241 Hunter Region MC  
NSW 2310 AUSTRALIA

Telephone +61 2 4014 4444  
Facsimile +61 2 4967 4100  
Email sales@bramco.com.au  
www.bramco.com.au

### Ordering Information

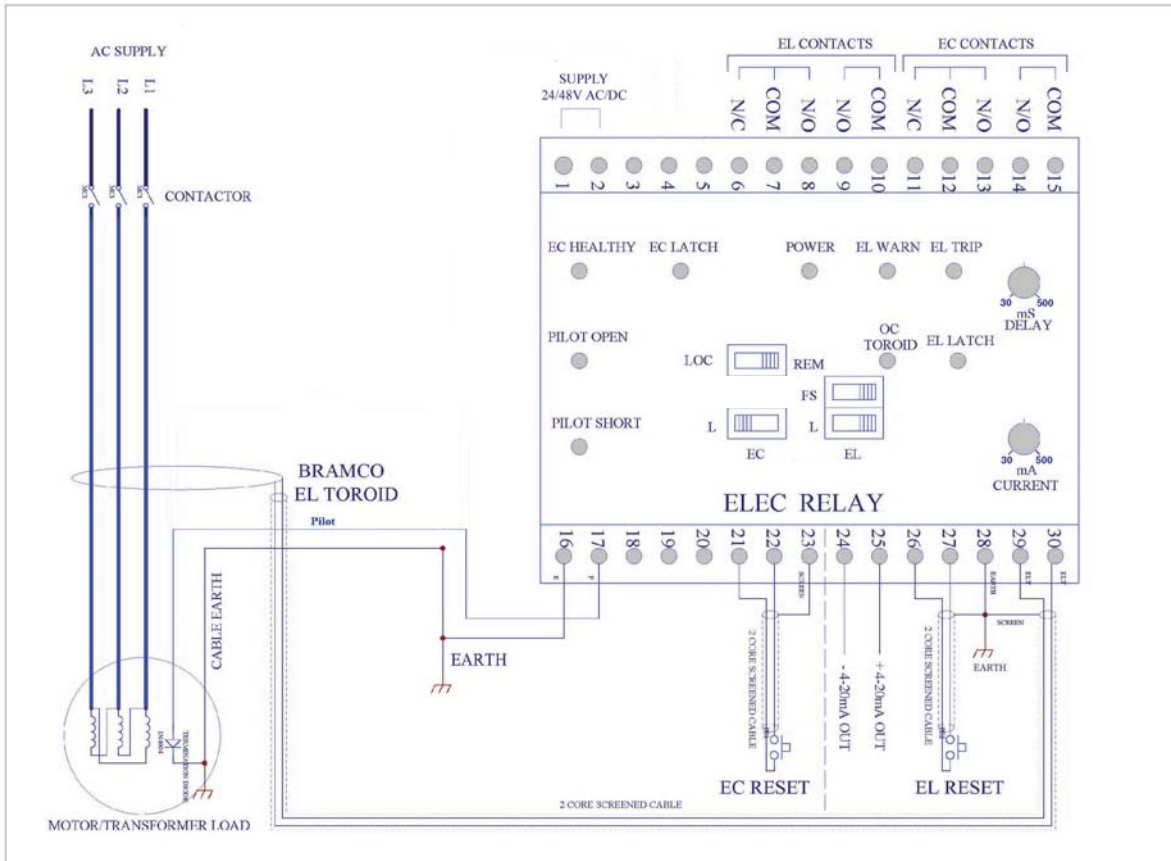
#### Order Code

A01017 500mA-500ms 24-48VAC/DC  
A01041 500mA-500ms 110VAC



### Connection Details

Recommended Diode Termination IN4004 - 1 amp 400v  
 Toroid Leads to be SCREENED CABLE. Earth Screened at RELAY END ONLY



### Outline and Mounting Hole Dimensions

