



# Earth Continuity Relay

## i-C 2

### Application

The Bramco Earth Continuity Relay i-C 2 has been designed to monitor the continuity of the Pilot Earth Circuit in a supply cable by grounding the pilot core via a diode and/or programmed terminating node.

The i-C 2 is a dynamic leap forward in the area of Earth Continuity devices. It boasts both local and remote control at the flick of a switch. It also has increased noise immunity, greater tolerance to cable capacitance which in turn provides vast increases in operational distances.

This device is particularly suitable for operation on high voltage long distance supply cables.

### The i-C 2 Offers

- Microprocessor based digital filtering to improve pilot noise immunity
- Continuous self-diagnostic analysis
- Remote circuit confirmation
- Fail safe operation
- Latching and non latching
- Local or remote control
- Pilot wire short and open circuit trip protection and indication
- Wide range of voltage supply options
- Proven track record - absolute reliability on an 11kV Tunnel machine with a 6km+ supply cable

### Specifications

#### Supply

- 110vAC 50/60Hz
- 240vAC 50/60Hz
- 24VAC/DC

#### Voltage Tolerances

- -30% to +20%

#### Operational

- from 0 to 45 Ohms

#### Fail Safe

Relay contacts energised whilst diode and/or node are healthy and earth resistance levels less than 45 Ohms

#### Pilot Wire

Diode and node termination to earth at remote end of cable

#### Relay contacts

- 2 pole changeover 5A-240v

#### Base Mounting

- DINrail or screw mounting

#### Material

- High impact poly carbonate

### Ordering Information

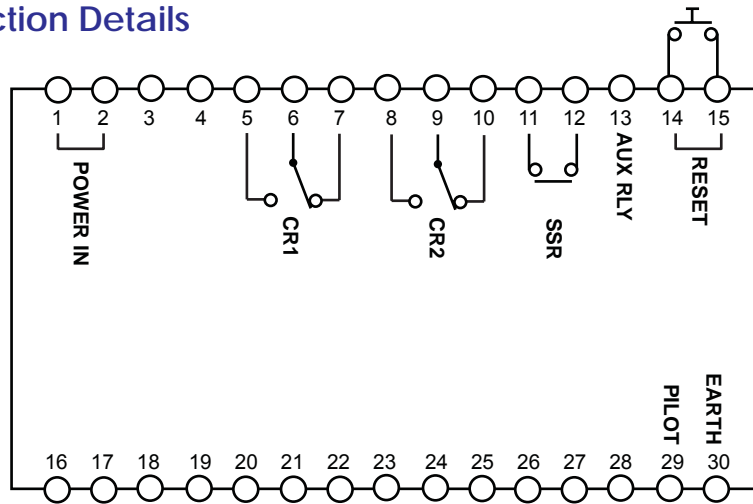
#### Order Codes

- |        |                               |
|--------|-------------------------------|
| A00638 | i-C 2 Addressable 24vAC/24vDC |
| A00639 | i-C 2 Addressable 110v/240v   |
| A00620 | i-C 2 Long Line 110v/240v     |

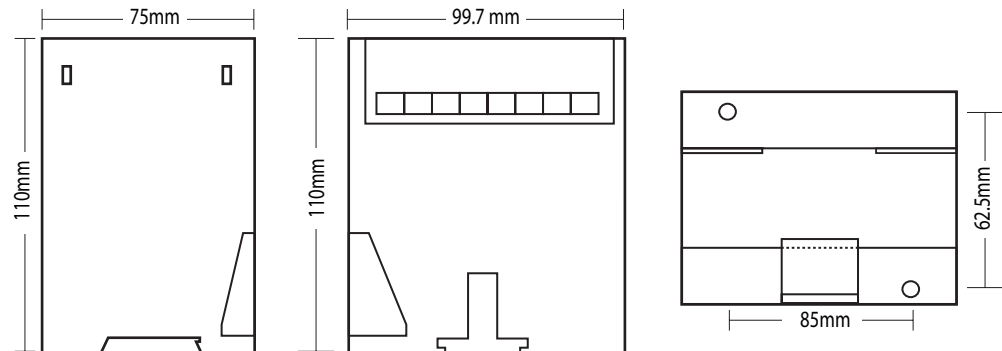
**Note:** i-C 2 Addressable requires a node and diode to be coupled to operate



### Connection Details



### Outline and Mounting Hole Dimensions



### Bramco Contacts

#### Head Office

Bramco Electronics  
ABN 49 327 604 798

Unit 2&3/2 Callistemon Close  
Warabrook NSW 2304  
PO Box 241 Hunter Region MC  
NSW 2310 AUSTRALIA

Telephone +61 2 4014 4444  
Facsimile +61 2 4967 4100  
Email [sales@bramco.com.au](mailto:sales@bramco.com.au)  
[www.bramco.com.au](http://www.bramco.com.au)

#### Distributor Locations Australia:

- Newcastle NSW
- Wollongong NSW
- Cairns QLD
- Brisbane QLD
- Perth WA
- Emerald QLD

#### South Africa:

- Heidelberg - Emis Sales
- Delmas - Bramco South Africa

#### USA:

- Bland, VA