

PROLOK3

Earth Leakage Lockout - Frozen Contactor

Leaders in Innovative Protection Systems, Bramco's PROLOK3 is compliant to the latest statutory and industry standards. The PROLOK3 provides next generation Earth Leakage Lockout and Frozen Contactor Protection.

Application:

ELL - Earth Leakage Lockout: monitors earth leakage on conductors in an outgoing load circuit before load contactor is closed and to prevent closing the contactor if the earth-leakage resistance is below pre-selected level.

FC - Frozen Contactor: monitors voltage on the outgoing load circuit when the load contactor is open, identifying leaky vacuum contactor or welded contactor, then initiate isolation of the incoming supply via circuit breaker back tripping.

Features:

ELL:

- Failsafe operation – relay opens on fault.
- Leakage menu selectable 50K – 1M ohms.
- Barrier monitored for integrity – causes trip if not connected.
- Common AR interlock contact input.
- Separate contacts.

FC:

- Non-Failsafe operation – relay closes on fault.
- Adjustable Timer inhibit for motor loads.
- More than 25/50VAC (selectable) on any phase will cause trip.
- Barrier monitored for integrity – causes trip if barrier fails to detect phase voltage during normal operation.
- Common AR interlock contact input.
- Separate contacts.

Isolation Barrier:

- Isolation Barrier and AR contact inputs are common to the PROLOK relay.

LED indication:

- Power Healthy / Fault
- FC Healthy / Fault
- ELL Healthy / Fault

LCD Display Includes:

- Status
- Configuration
- Fault Information
- Status and fault logs
- Diagnostics

Specifications:

Supply:

- 110VAC 50/60Hz 3VA.
- 240VAC 50/60Hz 3VA.
- 24-48VAC/DC 3VA.

Voltage Tolerance:

- -30% + 20%.
- -100% for 2 seconds.

Operating Temperature:

- 0 – 60Deg C.

ELL – Selectable range:

- 50K , 150K, 250K, 500K, 1M ohm.
- 2 x C.O. 5A 240VAC contacts – max recommended load 100VA.

FC – Leakage voltage:

- 25V or more.
- 2 x C.O. 5A 240VAC contacts – max recommended load 100VA.

FC Timer:

- Inhibit range 4 – 20 seconds.

Enclosure

Dimensions: 100mmW x 75mmH x 110mmD.

Material: High impact resistant polycarbonate construction.

Mounting: DIN rail or screw mounting.

Terminals: Cage screw terminals.

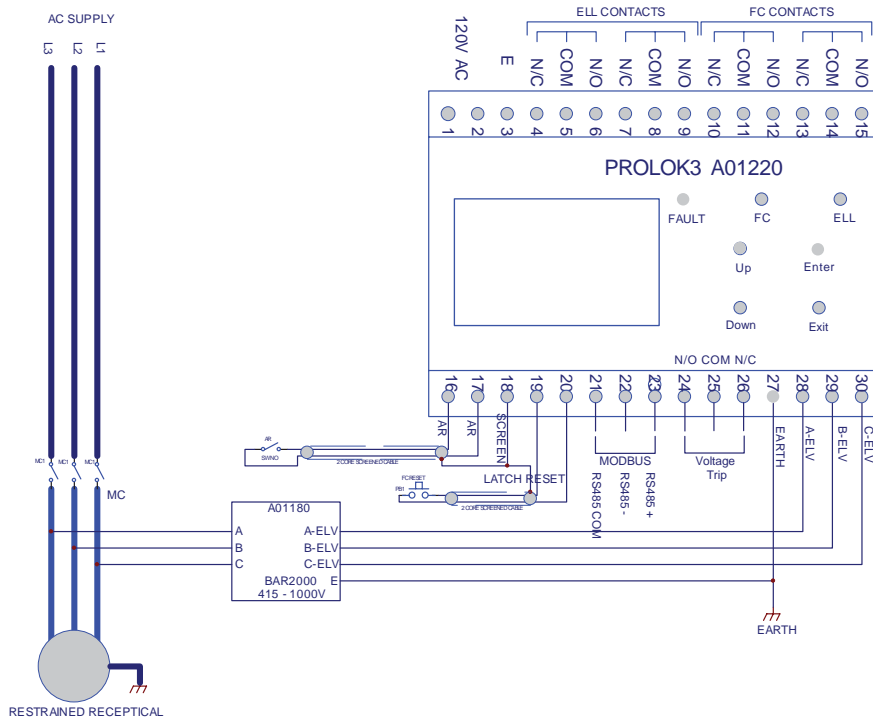
Weight: 300gms.



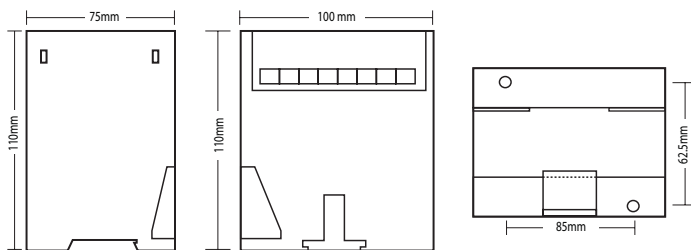
PROLOK3

Earth Leakage Lockout - Frozen Contactor

Connection Diagram:



Outline and Mounting Hole Dimensions



Compliance:

PROLOK3 has been Certified as ellfc3

The PROLOK3 comes with a 2 year warranty.

Bramco Contacts

Head Office
ABN 49 327 604 798

2 Callistemon Close
Warabrook NSW 2304
PO Box 241 Hunter Region MC
NSW 2310 AUSTRALIA

Telephone +61 2 4014 4444
Facsimile +61 2 4967 4100
Email sales@bramco.com.au

Ordering Information:

A01220 – PROLOK3 Relay 110VAC
A01222 – PROLOK3 Relay 240VAC
A01221 – PROLOK3 Relay 24-48VAC/DC
A01180 – BAR3 415 – 1000VAC Isolation Barrier